

CROSS WIRE CLAMP, SURFACE MOUNT

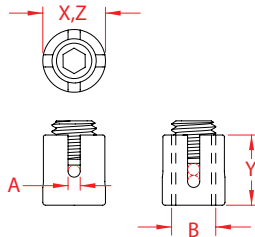
316 STAINLESS STEEL



Import



Precision
Cast



ITEM	A (wire)		X (height)	Y (length)	Z (width)	WT (lb)	PACKAGING TYPE	EACH (qty)	INNER (qty)	CARTON (qty)	UPC
S0722-0003	1/8"	0.40"	0.67"	0.75"	0.67"	0.06	POLYBAG	1	10	500	791506048862
S0722-0004	5/32"	0.50"	0.79"	0.83"	0.79"	0.07	POLYBAG	1	10	500	791506048879
S0722-0005	3/16"	0.55"	0.79"	0.91"	0.79"	0.08	POLYBAG	1	10	500	791506048886

NOTE:
MAY BE USED ONLY FOR WIRE ROPE GUIDANCE PURPOSES (NOT AS AN END CONNECTOR).
CAN BE USED IN ARCHITECTURAL APPLICATIONS SUCH AS TRELLIS SYSTEMS OR TO FORM WIRE NETTING.
FITTING CAN BE THREADED ON TO SURFACE ANCHOR BOLT.
ALL DIMENSIONS ARE NOMINAL (+/- 3%) AND ARE SUBJECT TO CHANGE WITHOUT NOTICE.